



**Inclusion in secure estates for
neurodiverse / SEND residents**

**Claire Collins (CCC) for the Education
and Training Foundation**

Prisoner Learning Alliance Conference, 8 Sept 2020

WELCOME



**Our workshop space and a
chance to meet others**

Room orientation

- Speaker and gallery views
- Using the chat function
- Turning your camera on and off
- Muting your microphone
- Making it easier to see the speaker when viewing slides
- Recording



A moment of reflection...

What do you hope, and expect, to learn in this workshop?

Think about this for a moment and jot it down if you like.

Jump into a breakout room for 3 minutes and find out what others hope to cover in the next hour....

To what extent was this activity inclusive?

Session Objectives

**To what extent do they meet
your hopes/ expectations?**

Session Objectives

- Define areas of focus when supporting residents with special educational needs and disabilities (SEND) / neurodiversity
- Explore resources and projects for SEND/ neurodiverse prison residents
- Learn about the Education and Training Foundation's (ETF's) Centres for Excellence in SEND.

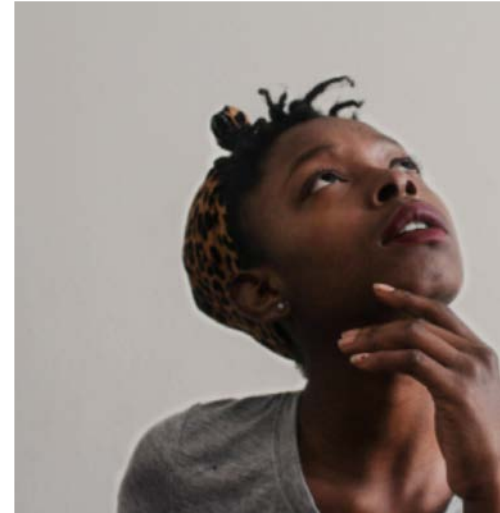
SEND, LDD and Neurodiversity

**Language and
definitions**

- **Special Educational Needs and Disabilities (SEND)**
- **Learning Difficulties and Disabilities (LDD)**
- **Neurodiversity**

Take a moment, think about what these labels mean to you....

Do the labels we use matter?



A definition of neurodiversity...

“In its simplest definition, neurodiversity is the concept that, with regards to the human brain and nervous system, people don’t all end up the same. In other words, it’s a concept that describes individuality and uniqueness in cognitive functioning.”

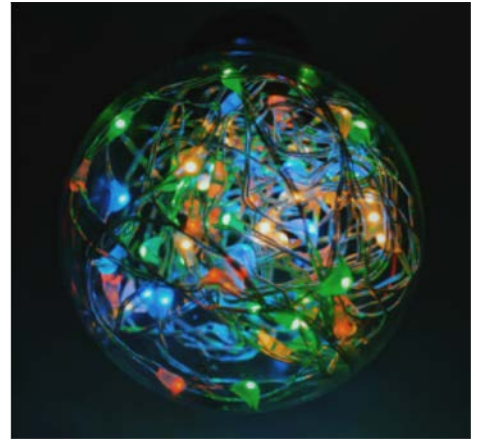
(The Neurodiversity Paradigm, Nick Walker (2017))

Found at: <http://neurocosmopolitanism.com/>

“The idea that there is one ‘normal’ or ‘healthy’ type of brain or one ‘right’ style of functioning is no more valid than the idea that there is one ‘normal’ or ‘right’ gender, race or culture.

The classification of neurodivergence (i.e. Autism, ADHD, Dyslexia) as medical, has no scientific base and instead reflects cultural prejudice and oppresses those labelled as such.”

(IBID)



The 4 areas of need from the 2014 SEND Code of Practice

- Communication and Interaction
- Learning and Cognition
- Social, Emotional and Mental Health
- Sensory and Physical Impairments

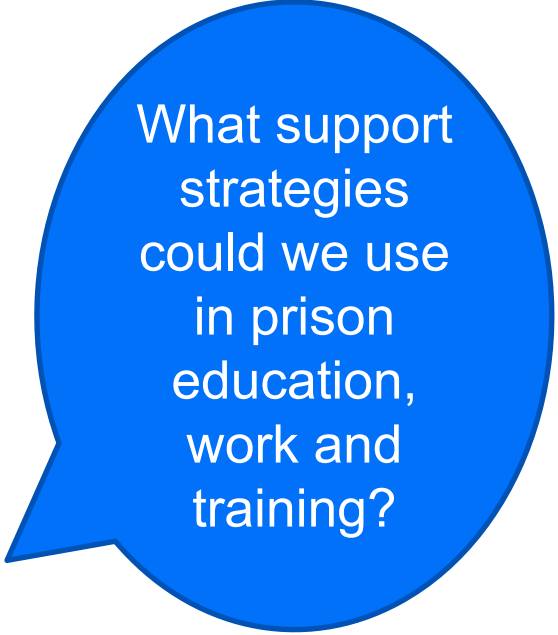


SEND Pathways

Communication + Interaction	Learning + Cognition	Social, Emotional + Mental Health	Sensory + Physical Impairments
<p>Autistic Spectrum Disorder</p> <p>Speech + Language Impairments</p> <p>Tourette Syndrome</p>	<p>Dyslexia</p> <p>Dyscalculia</p> <p>Dysgraphia</p>	<p>Self-harm</p> <p>Behaviour disorders</p> <p>ADD</p> <p>ADHD</p> <p>Depression</p>	<p>Hearing + Visual Impairments</p> <p>Duchenne Muscular Dystrophy</p> <p>Cerebral Palsy</p>

Areas we can focus on:

1. literacy and language
2. memory and organisation
3. co-ordination
4. numeracy
5. confidence and self-esteem
6. promoting positive behaviours and concentration
7. hearing / eyesight



What support strategies could we use in prison education, work and training?

Example area of focus: Memory and organisation

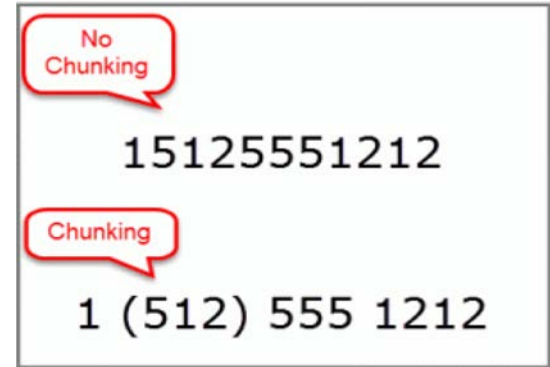
Our auditory memory is our ability to retain and recall information that we hear. It allows us to understand longer, more complex instructions and to listen and acquire new information. Learners with reduced auditory memory can find it extremely challenging to follow instructions and retain learning.



Photo by [David Matos](#) on [Unsplash](#)

Memory and organisation – suggested strategies

- Focus on learning strategies that maximise memory and improve recall (e.g. spaced rehearsal)
- Make learning links
- Encourage repetition, lists and diaries
- Suggest people write things down or visualise as a picture or object
- Make use of colour, mind maps and chunking
- Use digital tools that help with planning, organisation and schedules (yes, this is possible in prison!)



Support/ resources

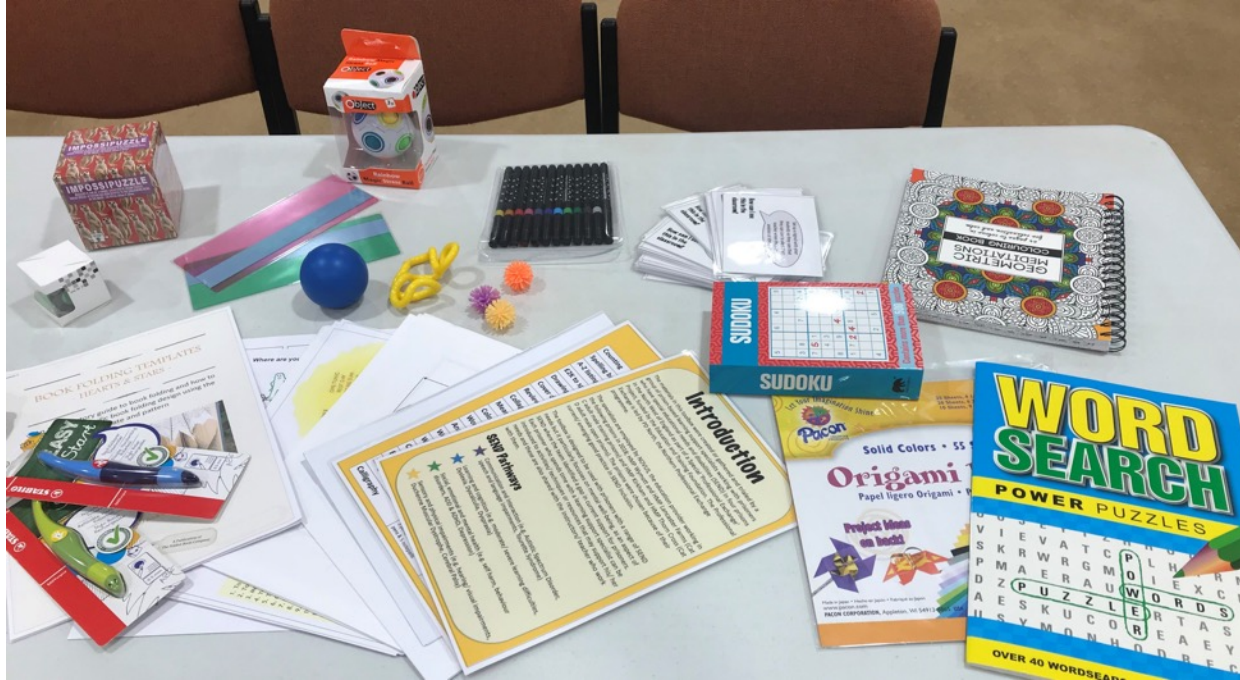
**ETF Projects and Centres
for Excellence in SEND**



CLAIRE COLLINS
consultancy

The Mindfulness Toolkit

EDUCATION & TRAINING
FOUNDATION





CLAIRE COLLINS
consultancy

The Mindfulness Toolkit

EDUCATION & TRAINING
FOUNDATION

Contents

Counting	Document	★ ★ ★ ★ ★
Spelling backwards	Document	★ ★ ★ ★ ★
A-Z listing	Document	★ ★ ★ ★ ★
£2k to spend	Catalogue	★ ★ ★ ★ ★
Drawing	3 pencils & 3 notepads	★ ★ ★ ★ ★
Cover design	Document	★ ★ ★ ★ ★
Review	Document	★ ★ ★ ★ ★
Collage	Magazines & catalogue	★ ★ ★ ★ ★
Measuring	1 Measuring tape	★ ★ ★ ★ ★
Colouring	3 book	★ ★ ★ ★ ★
Word task	Document	★ ★ ★ ★ ★
Anagrams	Document	★ ★ ★ ★ ★
Word ladder	Document	★ ★ ★ ★ ★
Word search	3 book	★ ★ ★ ★ ★
Crossword	3 book	★ ★ ★ ★ ★
Brain Gym	Document	★ ★ ★ ★ ★
Magnifying glass	1 magnifier	★ ★ ★ ★ ★
Calligraphy	3 pens, 10 handwriting pens & 3 notepads	★ ★ ★ ★ ★

SEND Pathways

- ★ Communication and interaction (e.g. Autistic Spectrum Disorder, speech and language impairments, Tourette Syndrome)
- ★ Learning and cognition (e.g. moderate/ severe learning difficulties, Dyslexia, Dyscalculia, Dyspraxia)
- ★ Social, emotional and mental health (e.g. self harm, behaviour disorders, ADD & ADHD, Depression)
- ★ Sensory and physical impairments (e.g. hearing/ visual impairments, Duchenne Muscular Dystrophy, Cerebral Palsy)

Toolkit Task Cards

Photo of the item or document included in the box

Colour coded tabs at the top for quick reference

Brief description of the activity and/or item

Front

Back

Colour coded stars related to SEND pathways

Suggestions for classroom use

How can I use this in the classroom?

This task lends itself well to lower level learners as they generally enjoy the measuring activities.

This has particular relevance to the workshop or Maths lessons but can also be a good diversifying task for an English class.

NOVUS
FOUNDATION FOR CHILDREN

PDNorth
Partnership Development North

EDUCATION & TRAINING FOUNDATION

The Mindful Toolkit

£2,000 to Spend

Provide learner with a catalogue and give them a set amount of money to spend (eg. £2000). The learners are then tasked to furnish a flat/house. The choice is theirs!

SEND pathway ★ ★ ★

How can I use this in the classroom?

This could be extended to being a scale drawing task or a writing task for Maths/English skills.

Learners generally enjoy this task as it allows them to do some shopping, they should be encouraged to make a list of purchases and costs.



CLAIRE COLLINS
consultancy

Find out more...

EDUCATION & TRAINING
FOUNDATION



<https://wke.lt/w/s/BbGrq>

Resources at:

<https://www.excellencegateway.org.uk/content/etf2859>

Centres for Excellence in SEND

3 Centres for Excellence in SEND, including Weston College (also a PEF provider)

Support for leaders, curriculum development and CPD

Collection of resources and guides

Read this [helpful summary](#) of the support available

Access the [SEND area](#) on the Excellence Gateway



Claire Collins

Claire.Collins@ccConsultancy.co.uk

@ClaireCollins8

ETFFOUNDATION.CO.UK

**THANK YOU
ANY QUESTIONS?**